

What you can bring into an exam



Items you CAN have:

Writing equipment in a clear, sealable plastic bag/case:

- black or blue pens (not erasable pens)
- 2B pencils, sharpener and eraser
- highlighters
- clear plastic ruler.



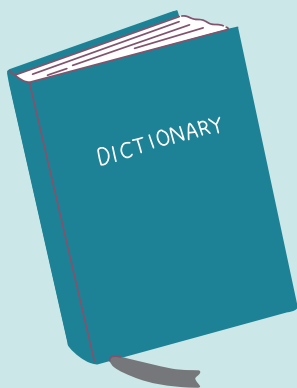
Basic analogue watch

- placed on the desk (not on your wrist).



Dictionaries

- see permitted types of dictionary and thesaurus.



Medication

- an asthma inhaler is accepted (with any other medication to be approved as a [Reasonable Adjustment](#)).



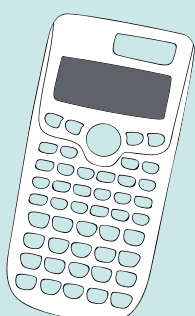
Water

- clear plastic bottle with 1500mL maximum capacity.

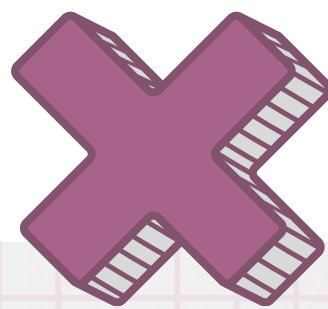


Calculators

- see permitted calculators for your course in [Calculator Use in External Exams – Rules and Requirements](#).

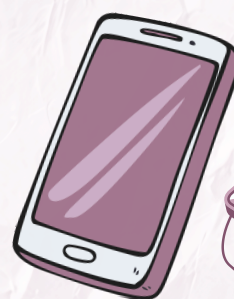


You must read the [External Assessment Rules](#) in full before your exams and ensure you only have permitted items.



Some items you CAN'T have*:

- Any electronic item that can share or store information
- any food or drinks (other than water)
- any loose notes, papers, books or notebooks
- any bags (that are not clear, sealable and plastic)
- correction pens, bottles or tape (e.g. Whiteout or Liquid Paper)
- any other item that is not approved for that external assessment.



* Items can be permitted if they are included in a student's approved [Reasonable Adjustments](#) for that exam.