

# HEALTH STUDIES

HLT315118

## Section **A** Introduction to Health/Personal Health

Pages: 16

Questions: 5

**Preparation time for this exam:** 15 minutes

**Suggested working time:** 60 minutes

### Instructions:

- There are **two (2)** parts to this section:
  - Part 1** – answer **all** questions and **all** items within each question
  - Part 2** – answer **one (1)** question.
- Write your answers in the spaces provided in this exam paper.
- The exam is **three (3) hours** in length. The suggested working time for this section is **approximately 60 minutes**.
- All answers must be written in **English**.
- You **must** make sure your answers address the listed criteria.

Marker use		
Q1	C8	/ 10
Q2	C1	/ 10
Q3	C4	/ 10
Q4 or Q5	C1	/ 30
Q4 or Q5	C7	/Alpha

Blank Page

# Guide to Exam Structure

---

		Parts	Questions available	Questions to answer	Suggested working time	Marks available
Section <b>A</b>	Part 1		3	3	30 minutes	30 marks
	Part 2		2	1	30 minutes	30 marks and A+ to z rating
Section <b>B</b>	Part 1		3	3	30 minutes	30 marks
	Part 2		2	1	30 minutes	30 marks and A+ to z rating
Section <b>C</b>	Part 1		3	3	30 minutes	30 marks
	Part 2		2	1	30 minutes	30 marks and A+ to z rating
<b>Totals</b>			<b>15</b>	<b>12</b>	<b>180 minutes (3 hours)</b>	<b>180 marks and A+ to z rating</b>

## Criteria

---

You **must** make sure your answers address:

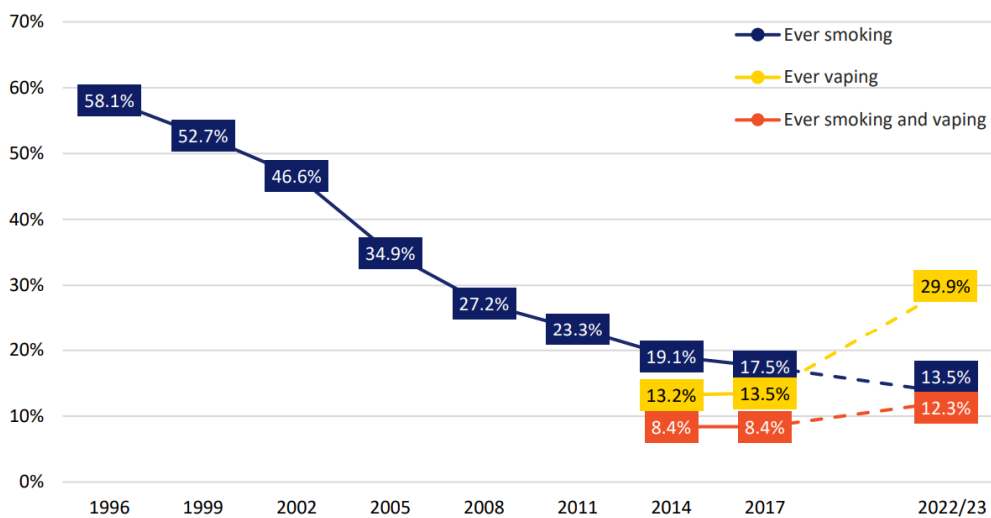
- Criterion 1 differentiate and analyse key factors that influence the health of individuals
- Criterion 4 investigate specific health issues, including options for preventive, curative and treatment strategies
- Criterion 7 communicate ideas and information in a variety of forms (only assessed in extended response)
- Criterion 8 analyse and interpret health related data and information.

- Answer **all** questions in this part.
- This part is worth 30 marks. The suggested working time for this section is **approximately 30 minutes**.

**Question 1 (10 minutes)**

This question assesses **Criterion 8**.

Using the information provided answer the following questions **using figures from the data in ALL answers**.



Note: The dotted line between 2017 and 2022/2023 indicates that caution should be exercised when interpreting this trend.

*Figure 1: Ever smoking and ever vaping over time among Australian secondary school students, 1996-2022/2023.*

Source: Australian secondary school students' use of tobacco and e-cigarettes (health.gov.au)

a) What does the graph represent?

.....

.....

/1

b) Use data to describe ever vaping between 2014 and 2022/23.

.....

.....

.....

.....

/3

**Question 1 continues**

**Question 1 continued**

Marker use

c) Discuss the trend for ever smoking and ever vaping from 1996–2022/2023. Include data to support your answer.

/3

.....

.....

.....

.....

.....

.....

d) What is the percentage change in the rates of **ever smoking** from 1996 to 2022/23, and the percentage change in the rates of **ever vaping**, as well as **ever smoking and vaping**, from 2014 to 2022/23? Indicate whether each change is an increase or a decrease.

/3

.....

.....

.....

.....

.....

.....

Total  
Q1  
/10

**Question 2 (10 minutes)**

Marker use

This question assesses **Criterion 1**.

- a) How do physical, mental, and social dimensions of health interact? Provide **one (1)** example to show how these dimensions influence each other for overall wellbeing.

/3

.....

.....

.....

.....

.....

.....

- b) Use **one (1)** example to explain the impact of the political environment on an individual's health.

/2

.....

.....

.....

.....

- c) List the **three (3)** principles of social justice. Choose and define **one (1)** and provide an example illustrating how this principle can be applied in a real-world context.

/5

.....

.....

.....

.....

.....

.....

.....

.....

.....

.....

.....

**Total**  
**Q2**  
**/10**





# Part 2

---

- Answer **one (1)** question in this part.
  - This part is worth 30 marks. The suggested working time for this part is **approximately 30 minutes**.
  - This part assesses **Criteria 1 and 7**.
- 

## Question 4

Young people often take risks.

- Define risk-taking and explain the difference between positive and negative risks.
- Provide **three (3)** factors that increase the likelihood of negative outcomes.
- Describe **one (1)** common risky behaviour that young people often engage in and explain why they might do so.
- Describe **two (2)** health promotion strategies that can help young people to reduce their involvement in this risky behaviour and minimise harm.

OR

## Question 5

“Health” is a complex and dynamic term.

- Describe how the physical, social, mental/emotional and spiritual components of health contribute to an individual’s overall health.
- Explain how physical, socio-cultural and political environments can influence an individual's health.
- Provide **one (1)** example for each environment to highlight a negative influence.









End of Section A

# Blank Page

Blank Page



TASMANIAN  
ASSESSMENT, STANDARDS  
& CERTIFICATION

---

This exam paper and any materials associated with this exam  
(including answer booklets, cover sheets, rough note paper, or information sheets)  
remain the property of Tasmanian Assessment, Standards and Certification.

External Assessment 2024

# HEALTH STUDIES

HLT315118

## Section **B** Introduction to Health/Australian Health

Pages: 16

Questions: 5

**Suggested working time:** 60 minutes

### Instructions:

- There are **two (2)** parts to this section:
  - Part 1** – answer **all** questions and **all** items within each question
  - Part 2** – answer **one (1)** question.
- Write your answers in the spaces provided in this exam paper.
- The exam is **three (3) hours** in length. The suggested working time for this section is **approximately 60 minutes**.
- All answers must be written in **English**.
- You **must** make sure your answers address the listed criteria.

Marker use		
Q6	C8	/ 10
Q7	C2	/ 10
Q8	C4	/ 10
Q9 or Q10	C2	/ 30
Q9 or Q10	C7	/Alpha

Blank Page

# Guide to Exam Structure

---

	Parts	Questions available	Questions to answer	Suggested working time	Marks available
Section <b>A</b>	Part 1	3	3	30 minutes	30 marks
	Part 2	2	1	30 minutes	30 marks and A+ to z rating
Section <b>B</b>	Part 1	3	3	30 minutes	30 marks
	Part 2	2	1	30 minutes	30 marks and A+ to z rating
Section <b>C</b>	Part 1	3	3	30 minutes	30 marks
	Part 2	2	1	30 minutes	30 marks and A+ to z rating
<b>Totals</b>		<b>15</b>	<b>12</b>	<b>180 minutes (3 hours)</b>	<b>180 marks and A+ to z rating</b>

## Criteria

---

You **must** make sure your answers address:

- Criterion 2 analyse influences on health status of populations within Australia
- Criterion 4 investigate specific health issues, including options for preventive, curative and treatment strategies
- Criterion 7 communicate ideas and information in a variety of forms (only assessed in extended response)
- Criterion 8 analyse and interpret health related data and information.

# Part 1

- Answer **all** questions in this part.
- This part is worth 30 marks. The suggested working time for this section is **approximately 30 minutes**.

## Question 6 (10 minutes)

This question assesses **Criterion 8**.

Using the information provided answer the following questions **using figures from the data in ALL answers**.

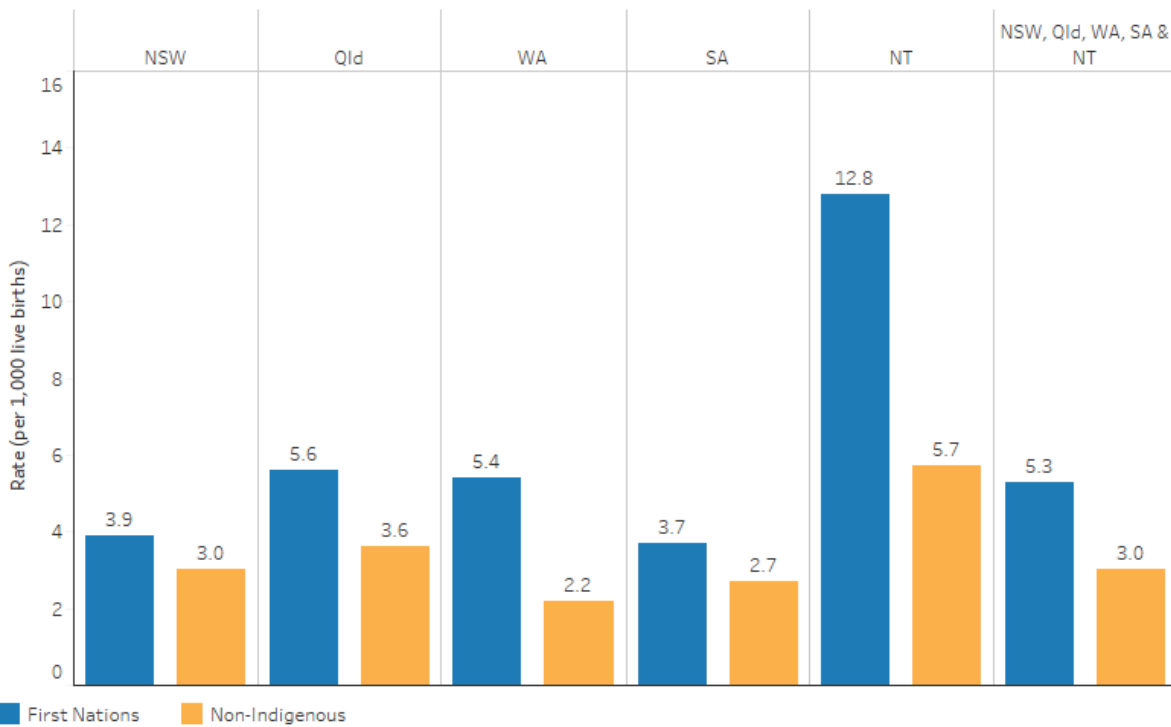


Figure 2: Infant (under 1) death rates, by jurisdiction and Indigenous status, NSW, Qld, WA, SA and the NT combined, 2017-2021.

Source: 1.20.4 AIHW National Mortality Database.

a) What trend is evident in the data? Provide relevant data to support your answer.

/3

.....

.....

.....

.....

.....

.....

Question 6 continues

**Question 6 continued**

Marker use

b) Which **two (2)** states or territories showed the smallest difference in infant mortality rates between First Nations and Non-Indigenous Australians? Include relevant data to support your answer.

/4

.....

.....

.....

.....

.....

.....

.....

.....

.....

c) What is the combined difference in total mortality rates per 1,000 live births between First Nations and Non-Indigenous Australian infants across all states and territories? Include relevant data to support your answer.

/3

.....

.....

.....

.....

.....

.....

.....

.....

.....

**Total  
Q6  
/10**

**Question 7 (10 minutes)**

Marker use

This question assesses **Criterion 2**.

- a) Why is health literacy important? Provide **one (1)** example to illustrate how individuals with higher health literacy are better equipped to make informed decisions about their well-being.

/4

.....

.....

.....

.....

.....

.....

.....

.....

.....

.....

.....

.....

.....

.....

.....

.....

.....

.....

.....

.....

.....

- b) Briefly describe **one (1)** example of a low profile or emerging health issue that individuals in Australia currently face.

/2

.....

.....

.....

.....

.....

.....

.....

.....

.....

.....

.....

.....

.....

.....

.....

.....

.....

.....

.....

.....

.....

**Question 7 continues**

**Question 7 continued**

**Marker use**

c) Why is health promotion important?

/2

.....

.....

.....

.....

.....

.....

d) What is Medicare?

/2

.....

.....

.....

.....

.....

.....

**Total  
Q7  
/10**





# Part 2

---

- Answer **one (1)** question in this part.
  - This part is worth 30 marks. The suggested working time for this part is **approximately 30 minutes**.
  - This part assesses **Criteria 2** and **7**.
- 

## Question 9

Within Australia, many groups encounter inequalities that impact their health status.

- Choose **one (1)** group and explain why they face health inequalities. Provide data to support your argument.
- Discuss in detail **two (2)** strategies or interventions put in place aimed at improving the health outcomes of your selected group.

OR

## Question 10

The health status of Australians is influenced by many factors.

- Identify **three (3)** common risk factors that negatively contribute to health conditions affecting Australians. Provide a brief description of the negative health outcomes associated with each risk factor. Include data.
- Describe **one (1)** health promotion campaign that aims to reduce the burden of disease associated with **one (1)** of these factors.
- Provide **one (1)** specific example of how the political environment in Australia has positively influenced public health by targeting **one (1)** risk factor that you have identified.









End of Section B

# Blank Page



---

TASMANIAN  
ASSESSMENT, STANDARDS  
& CERTIFICATION

---

This exam paper and any materials associated with this exam  
(including answer booklets, cover sheets, rough note paper, or information sheets)  
remain the property of Tasmanian Assessment, Standards and Certification.

External Assessment 2024

# HEALTH STUDIES

HLT315118

## Section **C** Introduction to Health/Global Health

Pages: 16

Questions: 5

**Suggested working time:** 60 minutes

### Instructions:

- There are **two (2)** parts to this section:
  - Part 1** – answer **all** questions and **all** items within each question
  - Part 2** – answer **one (1)** question.
- Write your answers in the spaces provided in this exam paper.
- The exam is **three (3) hours** in length. The suggested working time for this section is **approximately 60 minutes**.
- All answers must be written in **English**.
- You **must** make sure your answers address the listed criteria.

Marker use		
Q11	C8	/ 10
Q12	C3	/ 10
Q13	C4	/ 10
Q14 or Q15	C3	/ 30
Q14 or Q15	C7	/Alpha

Blank Page

# Guide to Exam Structure

---

	Parts	Questions available	Questions to answer	Suggested working time	Marks available
Section <b>A</b>	Part 1	3	3	30 minutes	30 marks
	Part 2	2	1	30 minutes	30 marks and A+ to z rating
Section <b>B</b>	Part 1	3	3	30 minutes	30 marks
	Part 2	2	1	30 minutes	30 marks and A+ to z rating
Section <b>C</b>	Part 1	3	3	30 minutes	30 marks
	Part 2	2	1	30 minutes	30 marks and A+ to z rating
<b>Totals</b>		<b>15</b>	<b>12</b>	<b>180 minutes (3 hours)</b>	<b>180 marks and A+ to z rating</b>

## Criteria

---

You **must** make sure your answers address:

- Criterion 3 analyse and compare global health status across populations
- Criterion 4 investigate specific health issues, including options for preventive, curative and treatment strategies
- Criterion 7 communicate ideas and information in a variety of forms (only assessed in extended response)
- Criterion 8 analyse and interpret health related data and information.

# Part 1

- Answer **all** questions in this part.
- This part is worth 30 marks. The suggested working time for this section is **approximately 30 minutes**.

## Question 11 (10 minutes)

This question assesses **Criterion 8**.

Using the information provided on Figures 3 and 4, answer the following questions.

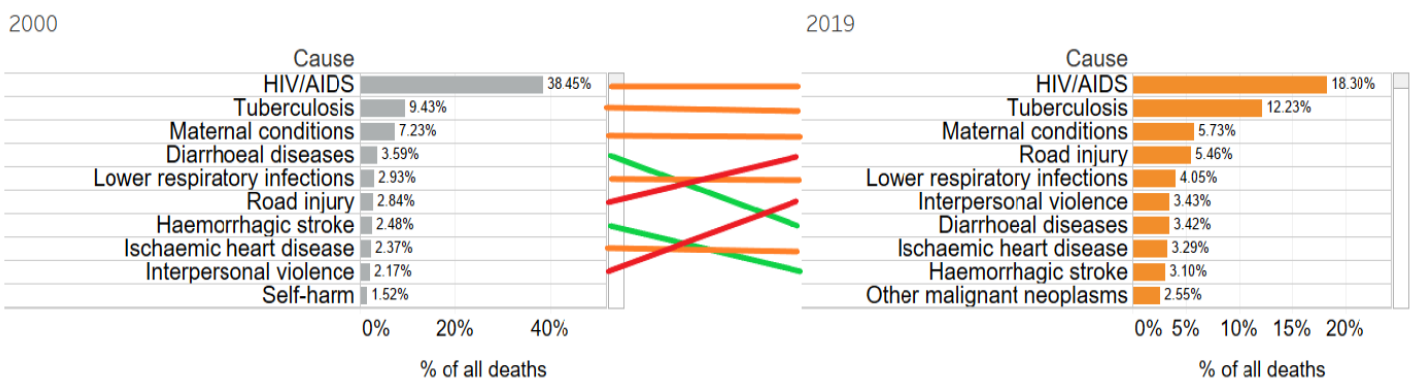


Figure 3: Top 10 causes of death in the 30–49 age group (% of deaths), in the African Region, 2000 and 2019.

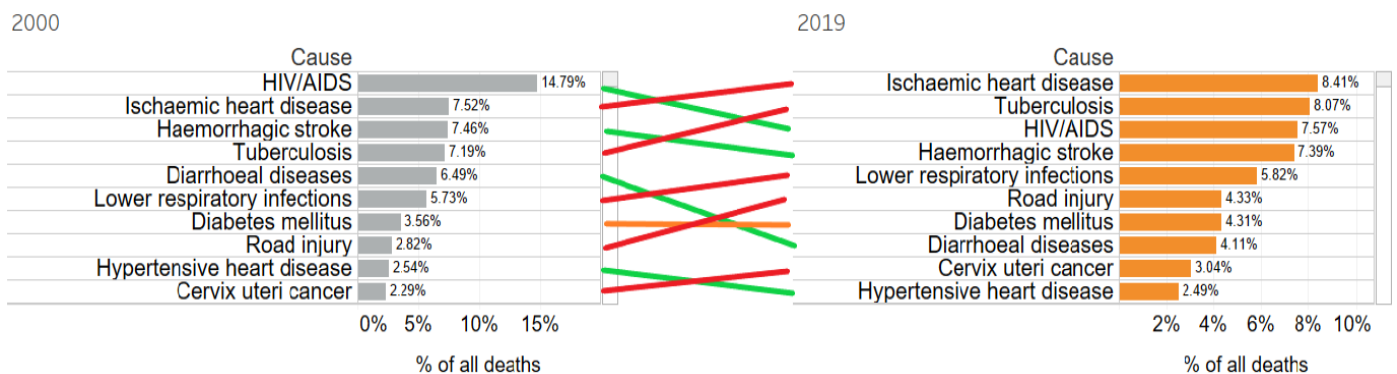


Figure 4: Top 10 causes of death in the 50–59 age group (% of deaths), in the African Region, 2000 and 2019.

Source: *iAHO\_Mortality\_Regional-Factsheet.pdf (who.int)*

Question 11 continues

**Question 11 continued**

Marker use

- a) Which cause of death had the largest percentage decrease in the 30–49 age group? Provide data to support your answer.

/2

.....

.....

.....

.....

- b) Identify the causes of death among the 30–49 age group that are **not** in the top 10 causes for the 50–59 age group.

/2

.....

.....

.....

.....

- c) Making reference to the data in both graphs, compare and contrast the trend of tuberculosis deaths.

/2

.....

.....

.....

.....

- d) Identify **four (4)** causes of death that have increased from 2000–2019. Provide the age group, the percentages and the percentage difference:

/4

Cause	Age group	% 2000	% 2019	% difference

**Total  
Q11  
/10**

**Question 12 (10 minutes)**

Marker use

This question assesses **Criterion 3**.

a) What are the Sustainable Development Goals (SDGs) and when were they implemented?

/2

.....  
.....  
.....  
.....

b) How can Primary Health Care improve the health of people in Least Developed Countries? Use **one (1)** example to support your answer.

/3

.....  
.....  
.....  
.....  
.....  
.....

c) Define **one (1)** type of foreign aid and provide **one (1)** example. Why is this aid beneficial in addressing global challenges?

/5

.....  
.....  
.....  
.....  
.....  
.....  
.....  
.....  
.....  
.....  
.....

**Total**  
**Q12**  
**/10**





# Part 2

---

- Answer **one (1)** question in this part.
  - This part is worth 30 marks. The suggested working time for this part is **approximately 30 minutes**.
  - This part assesses **Criteria 3** and **7**.
- 

## Question 14

- Discuss the impact a natural or man-made disaster can have on a Least Developed Country (LDC) compared with that of a more developed country.
- Outline the role of international aid for LDCs immediately after these disasters.
- Using examples, discuss the negative impacts aid can have, including dependency, misallocation of resources, and other potential issues.

OR

## Question 15

Select **one (1)** Least Developed Country (LDC) you have studied this year.

- Provide a brief profile of the country and include **five (5)** health indicators.
- Explain the importance of **one (1)** Sustainable Development Goal (SDG) from goals 1–6 as a global initiative.
- Describe **one (1)** strategy implemented in your chosen country to achieve this SDG.
- Discuss how this strategy has enhanced the quality of life for people in the country.









End of Section C  
**Blank Page**

Blank Page



TASMANIAN  
ASSESSMENT, STANDARDS  
& CERTIFICATION

---

This exam paper and any materials associated with this exam  
(including answer booklets, cover sheets, rough note paper, or information sheets)  
remain the property of Tasmanian Assessment, Standards and Certification.